



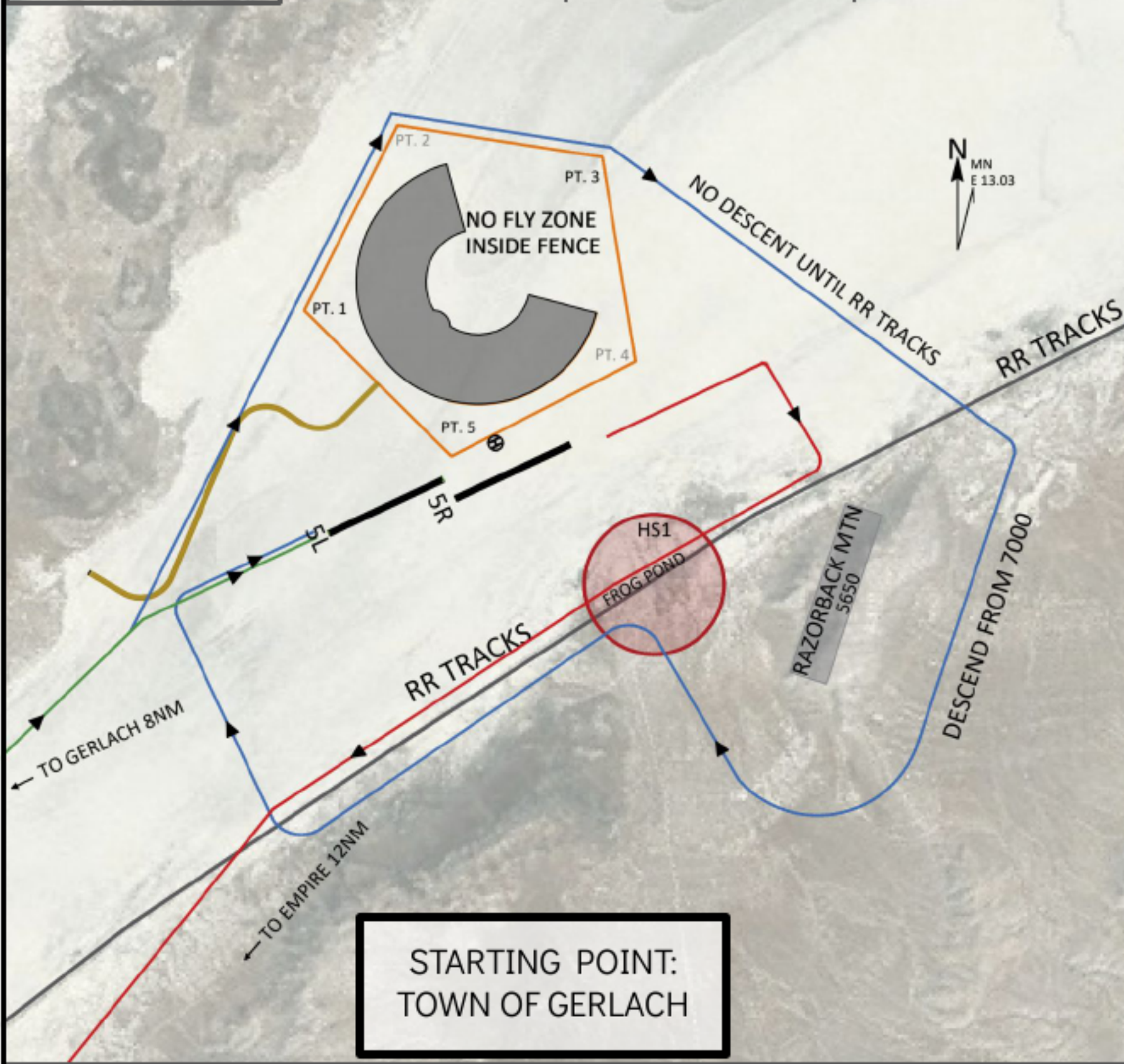
# VFR ARRIVAL/DEPARTURE RWY 5L/5R

Apt Elev  
3904

BLACK ROCK CITY (88NV) – 2024

See advisory for hours – new arrivals must land by 6PM local, airport closes 6:30PM local.  
Arrivals make initial radio call at approx 10 nm, over Gerlach.  
TPA: 5000 < 100 KIAS, 5500 >= 100 KIAS. Be at TPA by Frog Pond.  
Overflights: 7000. Fly blue arrival route then red departure route.  
Weather / closure information: <https://airport.burningman.org/weather> or (775) 557-6027  
HS1: be alert for converging departure and scenic traffic over Frog Pond.

BLACK ROCK TOWER 134.7 (CTAF)	BLACK ROCK GROUND 118.35	BLACK ROCK UNICOM 122.9	BxA OPS 121.05
----------------------------------	-----------------------------	----------------------------	-------------------



	ARRIVAL: Fly over Gerlach at TPA and fly straight-in to 5L. If unfamiliar with 88NV, the Scenic Arrival is recommended.
	SCENIC ARRIVAL: Maintain <u>7000</u> . Enter Scenic Pattern at Point One. Keep > 1 NM distance to Razorback Mountain for traffic separation.
	DEPARTURE: Turn right crosswind and downwind as depicted. Upon request, N or E departures fly runway heading <u>5000</u> for 3 miles, then on course.

REVISION 2 - 8/1/2024

FOR PLANNING PURPOSES ONLY, CONSULT OFFICIAL RESOURCES FOR NAVIGATION AND OBSTRUCTIONS